

COMPACT TOOL CARRIER | ICX

 **JCB**

# SITE MASTER

THE ONE MACHINE FLEET



**STAGE V**

GROSS POWER  
**36kW (49hp)**

MAX DIG DEPTH  
**3.08m**

SHOVEL CAPACITY  
**0.28m<sup>3</sup>**

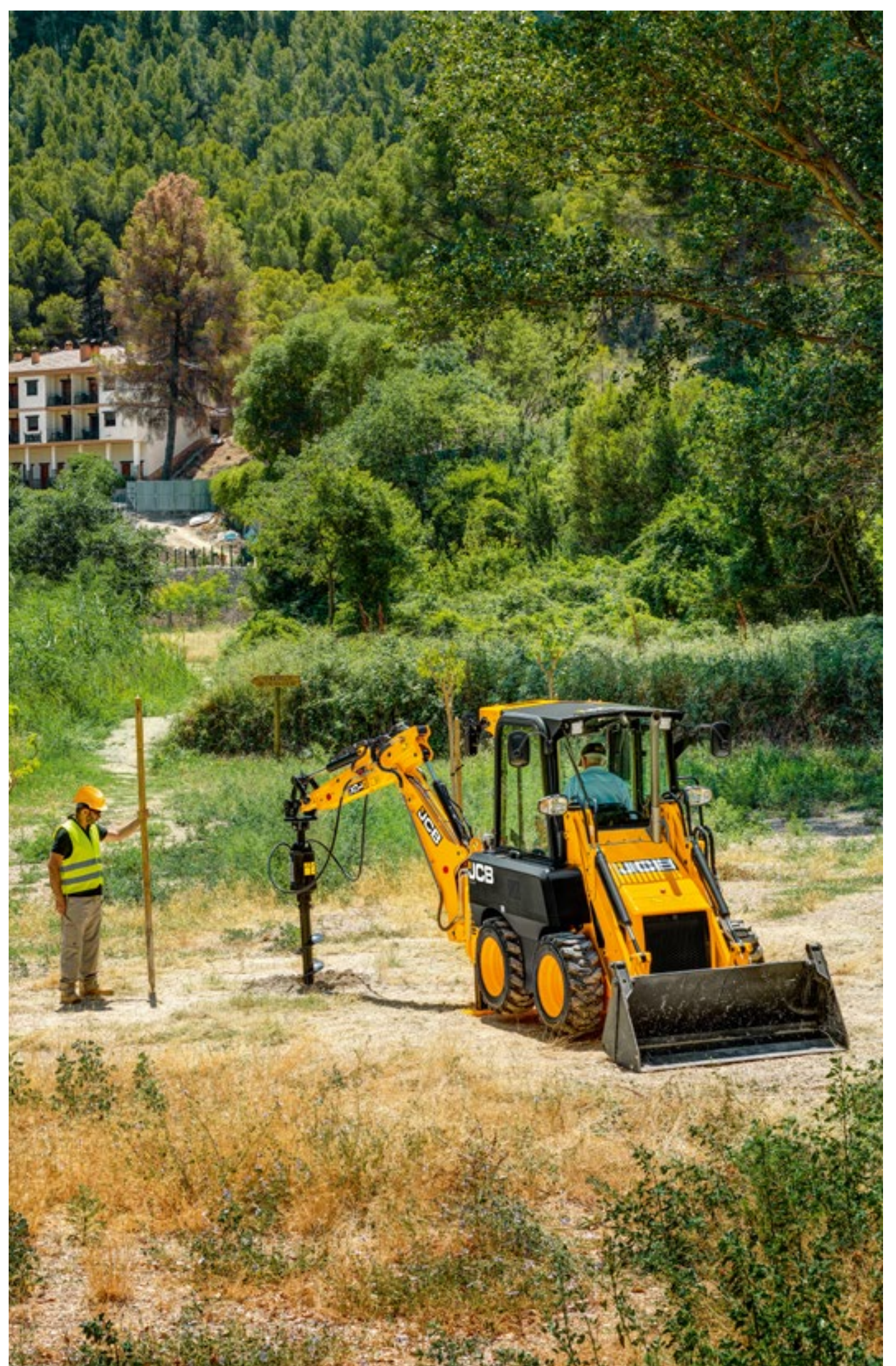
# SITEMASTER OF VERSATILITY

The JCB ICX compact excavator loader is one of the most versatile machines in the world. By combining an excavator and loader you get two machines in one.



## SITEMASTER OF ALL JOBS

The 6-in-1 shovel, skid-steer quick hitch and auxiliary pipework makes this machine the ultimate tool carrier, enabling a range of front and rear mounted hydraulic attachments to be utilised.



# SITEMASTER OF MANOEUVRABILITY

The compact dimensions of the ICX enable it to fit through confined spaces, including doorways, and makes it easily transportable.



## EXCEPTIONAL TURNING CIRCLE

Skid steer style turning and the ability to spin on its own axis, provides greater manoeuvrability in confined spaces.

# SITEMASTER OF PERFORMANCE

The excavator can slide across the rear frame minimising machine repositioning and providing better visibility when digging in off-centre positions.



## RELIABILITY AND DURABILITY

The ICX Sitemaster has a powerful and durable loader arm design capable of breakout forces up to 2,350kgf and a loadover height of up to 2.6m.

# SITEMASTER OF POWER & EFFICIENCY

A powerful engine is installed into this compact, agile machine, which together with their loading and digging capabilities enable them to tackle the toughest jobs.



## GREATER POWER

Impressive power, equivalent to a 2.5 tonne mini excavator is accompanied by an optional extending dipper, which gives a dig depth of 3.08m and improves reach by 0.5m.

# SITEMASTER OF COMFORT

The Sitemaster cab and canopy are designed for operator protection, and for day-long operator comfort with ergonomic and intuitive controls.



## GREATER VISIBILITY

A narrow boom and dipper enables exceptional visibility when excavating, while a steep-nosed bonnet provides a clear view of the shovel.





## ICX

The JCB ICX comes as standard with a skid-steer quick hitch, 45 litres/minute hydraulics and a 2.55m fixed dipper, offering skid steer and excavator performance in one package.

## ICX PLUS

The ICX PLUS has added features as standard, including a cab with air conditioning for added operator comfort, and a 3.08m extending dipper, providing improved reach and dig depth.



# COMPACT TOOL CARRIER | ICX



## SPECIFICATION

MODEL	ICX	ICX PLUS
Engine	2.2L Perkins Turbo	2.2L Perkins Turbo
Power	36.3 kW (49hp)	36.3 kW (49hp)
Torque	190Nm	190Nm
Transmission	Hydrostatic	Hydrostatic
Dig depth	2.55m fixed/3.08m extending	3.08m extending only
Shovel capacity	0.28m <sup>3</sup>	0.28m <sup>3</sup>
Load-over height	2.59m	2.59m
Hydraulic flow	45 l/min standard flow	45 l/min standard flow
Operating weight	3158kg	3,254 kg
Wheels	16", 16"	16", 16"
Cab/Canopy	Canopy only	Cab with AC as standard



## STANDARD FEATURES

- Servo control
- Standard flow hydraulics
- Reverse drive
- Sideshift
- Skid steer loader hitch
- Self-levelling loader arm
- Hydrostatic transmission
- 360 radial turning
- LED worklights





# JCB SITEMASTER THE ONE MACHINE FLEET

**REQUEST A QUOTE**



**JCB**

[www.jcb.com](http://www.jcb.com)

